



Model: **16-480L** Item #: _____ Date: _____
Project: _____ Qty: _____ Approved By: _____

4" Center Deck Mount Metering Faucet

Royal Series



DESCRIPTION

- 4" Center Deck Mount Metering Faucet with Cast Spout, Polished Chrome Finish, 1.5 GPM Male Aerator Installed

STANDARD FEATURES

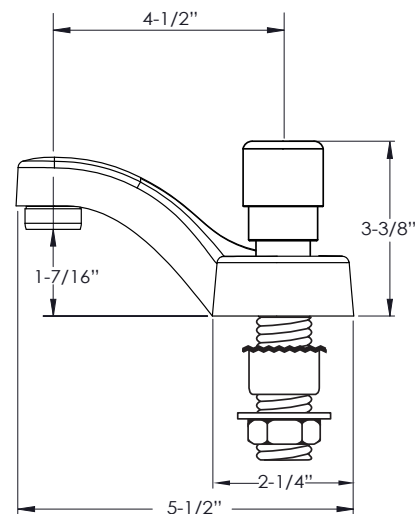
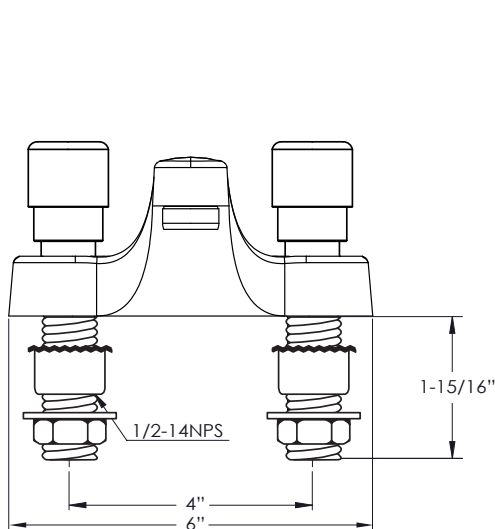
- Self-closing metering valves with adjustable timed flow
- Factory preset at 10 seconds
- Adjustable from 5-60 seconds
- Requires less than 5lbs of operating force to activate flow per ANSI 117.1
- Vandal resistant push button cap with hot and cold index
- Warranty: 3 years

SPECIFICATIONS

Water Inlet	1/2" NPS Male
Temp. Range	40°F - 180°F
Pressure	20-120 PSI
Rough In	7/8" Round Holes on 4" Center
Flow Rate	1.5 GPM
Material	Solid Brass
Finish	Polished Chrome
Weight	5 lbs.

PRODUCT COMPLIANCE

- NSF-61 & NSF/ANSI 372
- ASME A112.18.1-2011/CSA B125.1-11 & NSF/ANSI 372
- Meets ANSI A117.1 (ADA)
- Massachusetts Approved
- CEC Approved



WARNING: Plumbing connections should be made by qualified personnel who will observe all applicable plumbing, sanitary and safety codes.
California Proposition 65 Warning

Krowne Metal Corporation • 100 Haul Rd. Wayne, NJ 07470 • P: (800) 631-0442 • customerservice@krowne.com • krowne.com

Due to our commitment to continued product improvement, specifications are subject to change without notice.

Rev. 03/2021 • No. 16-480L